

New methods for the management of fish stocks in the context of the new European Regulation for Mediterranean Fishery



A. Kallianiotis

Fisheries Research Institute

Nea Peramos, 640 07, Kavala, Greece

Mediterranean characteristics

- Remarkable overlapping of fishery with other activities (tourism, amateurs, aquaculture)
- Danger for sensitive habitats like posidonia meadows, natural reefs, hard substratum biocenosis
- Fishery based on young specimens
- Difficulties in definition of suitable management measures
- Difficulties in the measure implementation
- Social importance of fishery in certain areas



The European Regulation 1967/2006

- **The Commission urges the development of a European plan for the conservation and the sustainable exploitation of marine Mediterranean fish stocks in the context of the Common Fishery Policy**
- **The contribution of fish skippers, researchers and administration (national and European is essential for the definition and the application of this plan.**
- **The regulation was approved in 2006.**

The European Regulation 1967/2006

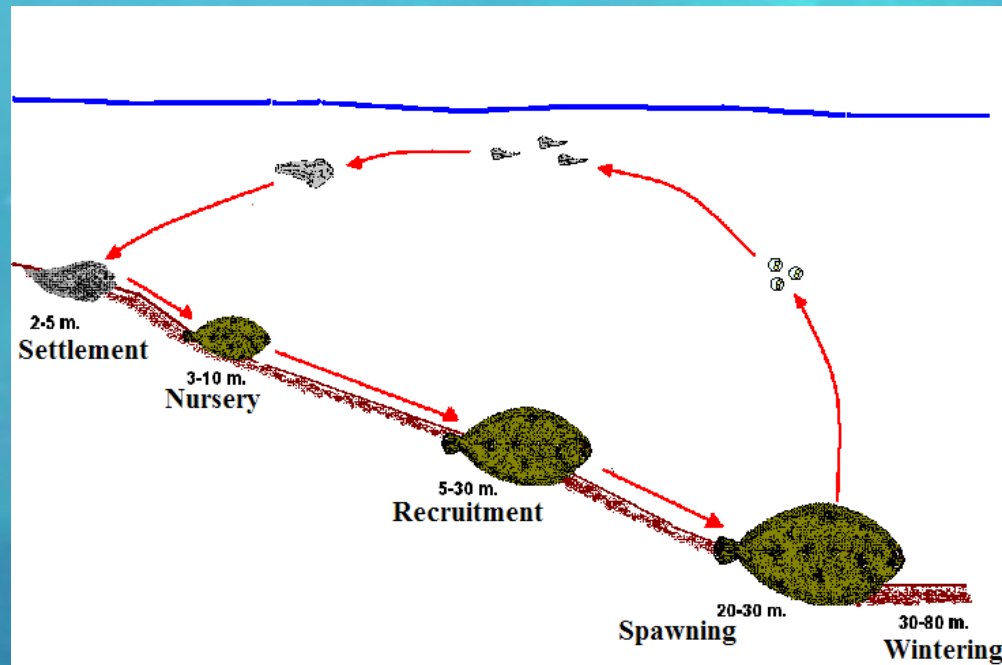
- **Stock management at regional, national and European level**
- **Holistic approach (ecosystem, biological resources, economic and social characteristics)**
- **Co-management and co-responsibility of all the parties involved.**
- **Support of management system with scientific information**
- **Temporal application of management rules**

Fishery protected areas

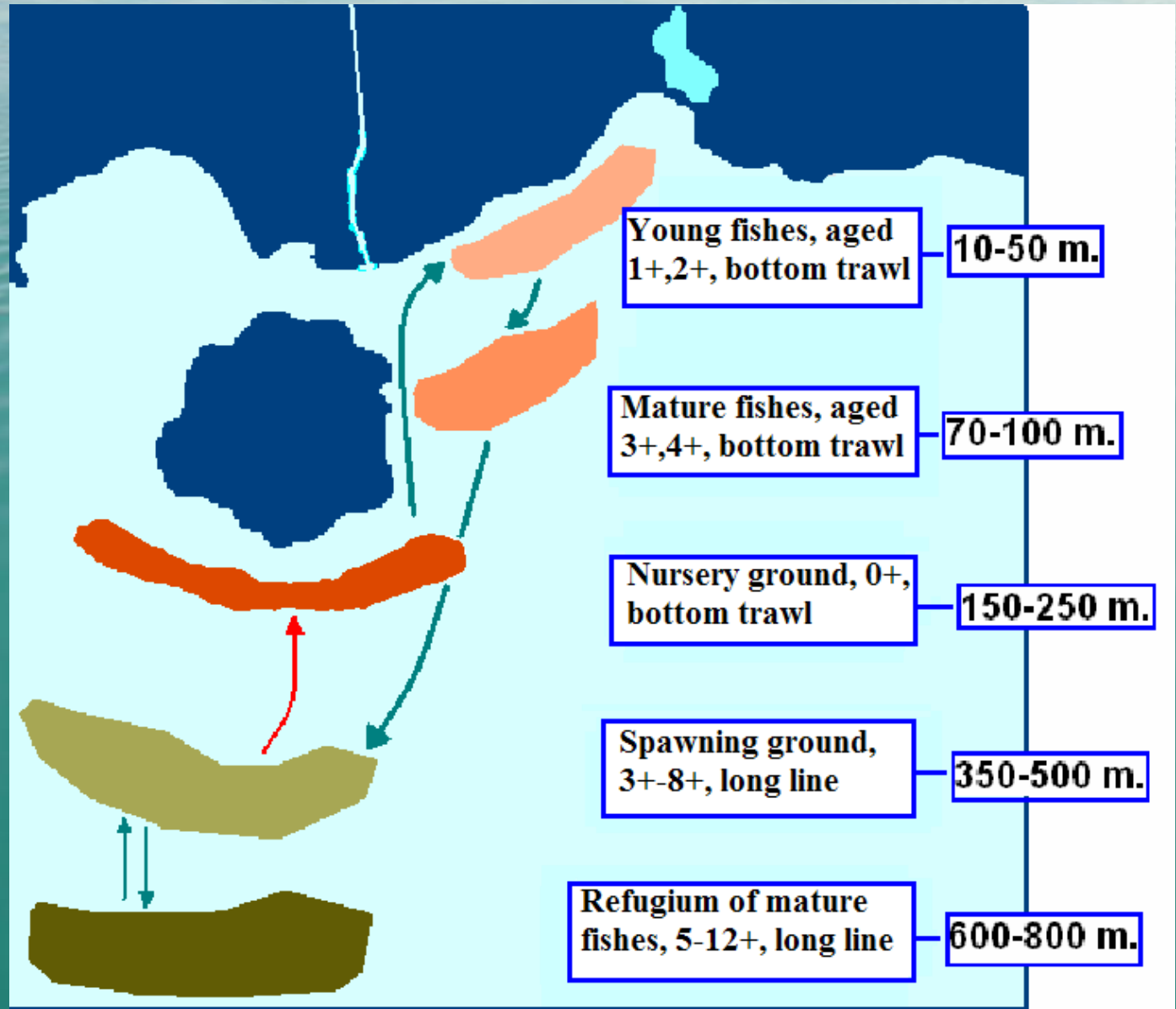
- Definition and protection of sensitive habitats as Phanerogams, natural reefs, coral beds or other hard substratum organisms
- Management of biological resources important for fishing dependent zones

Fishery protected areas

- Protection of important species in the most significant biological phases of their life (nursery grounds, recruitment)



Merluccius merluccius



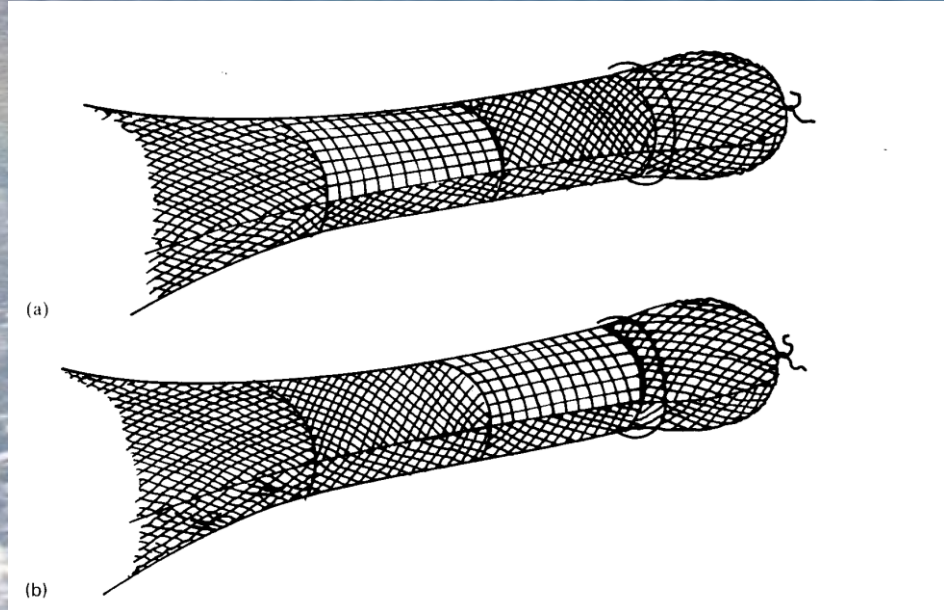
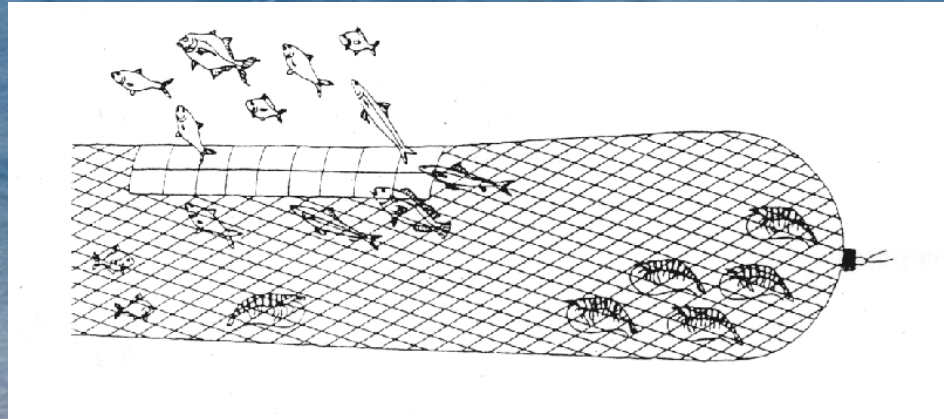
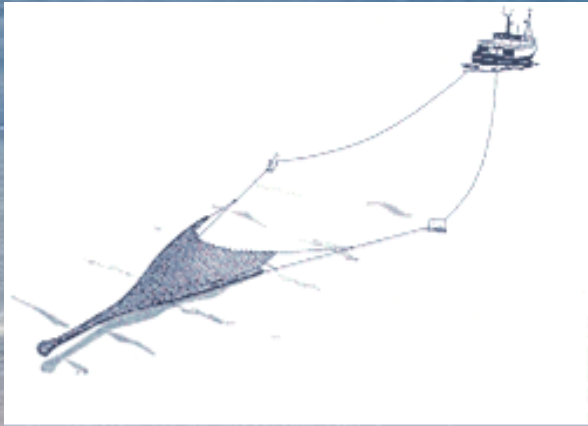
Nursery grounds *M.merluccius*



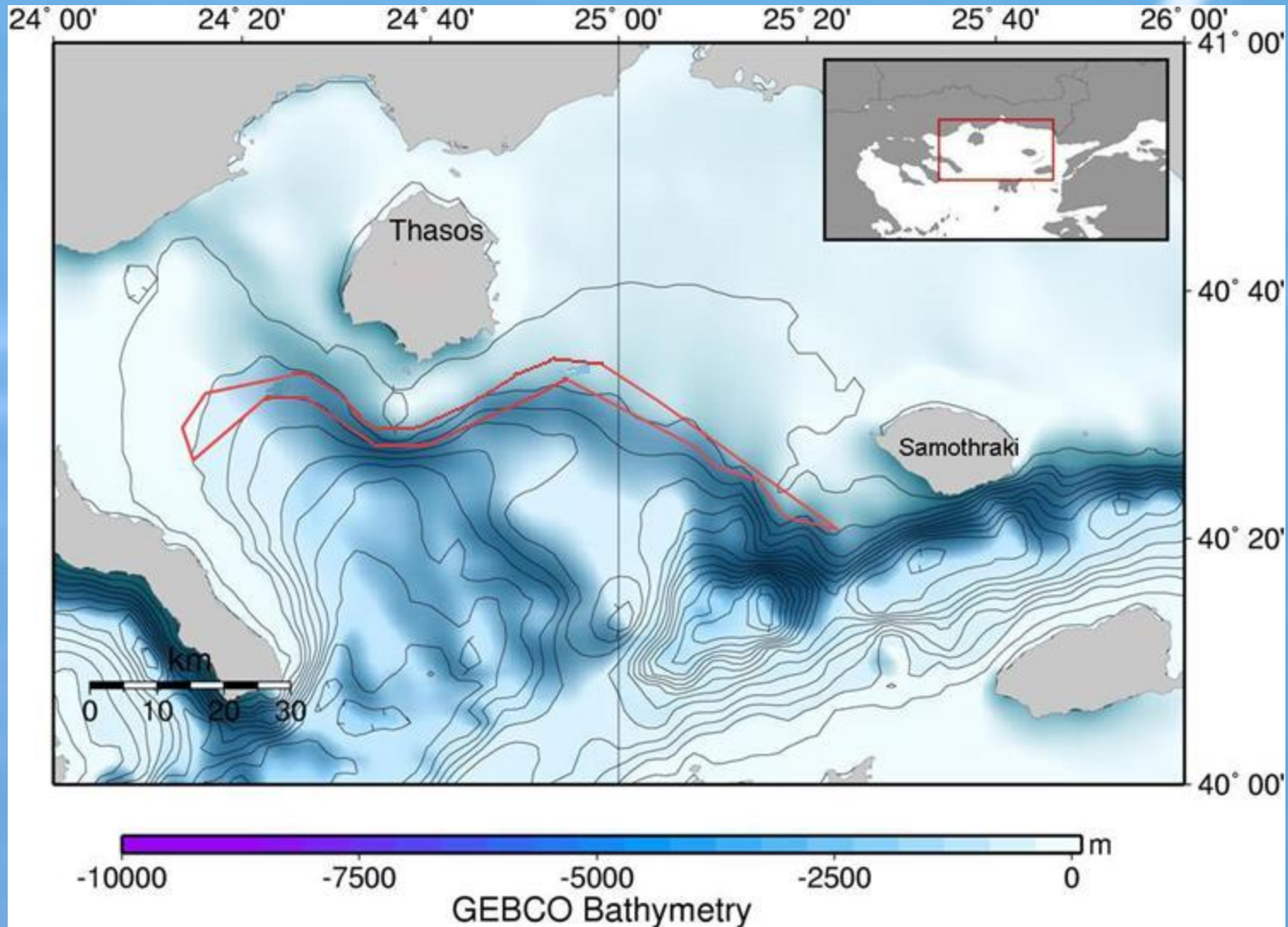
**Proportion of commercial and discarded part of hake
(*Merluccius merluccius*) in the nursery ground.**

Month	Commercial %	Discarded %
October	78	22
January	23	77
May	5	95
June	3	97
July	16	84

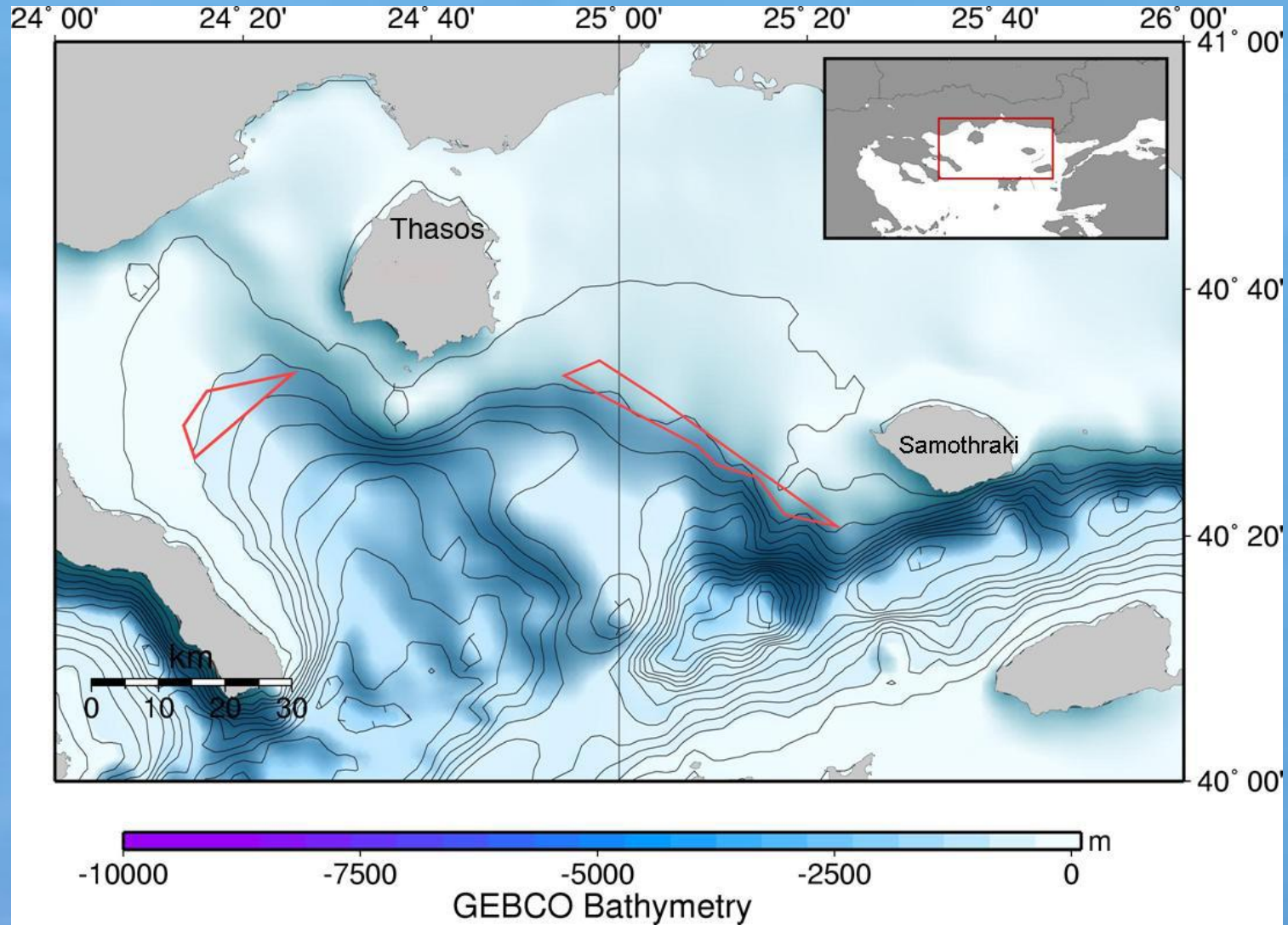
Improving Selectivity in towing gears



Protected area



Protected area



Actions for the establishment of a protected area

- **Allocation of the area**
- **Approval by national and international authorities**
- **Management according to the local characteristics and priorities**
- **Area seasonally closed**
- **Definitions of a monitoring plan**

Grazie per la vostra attenzione

